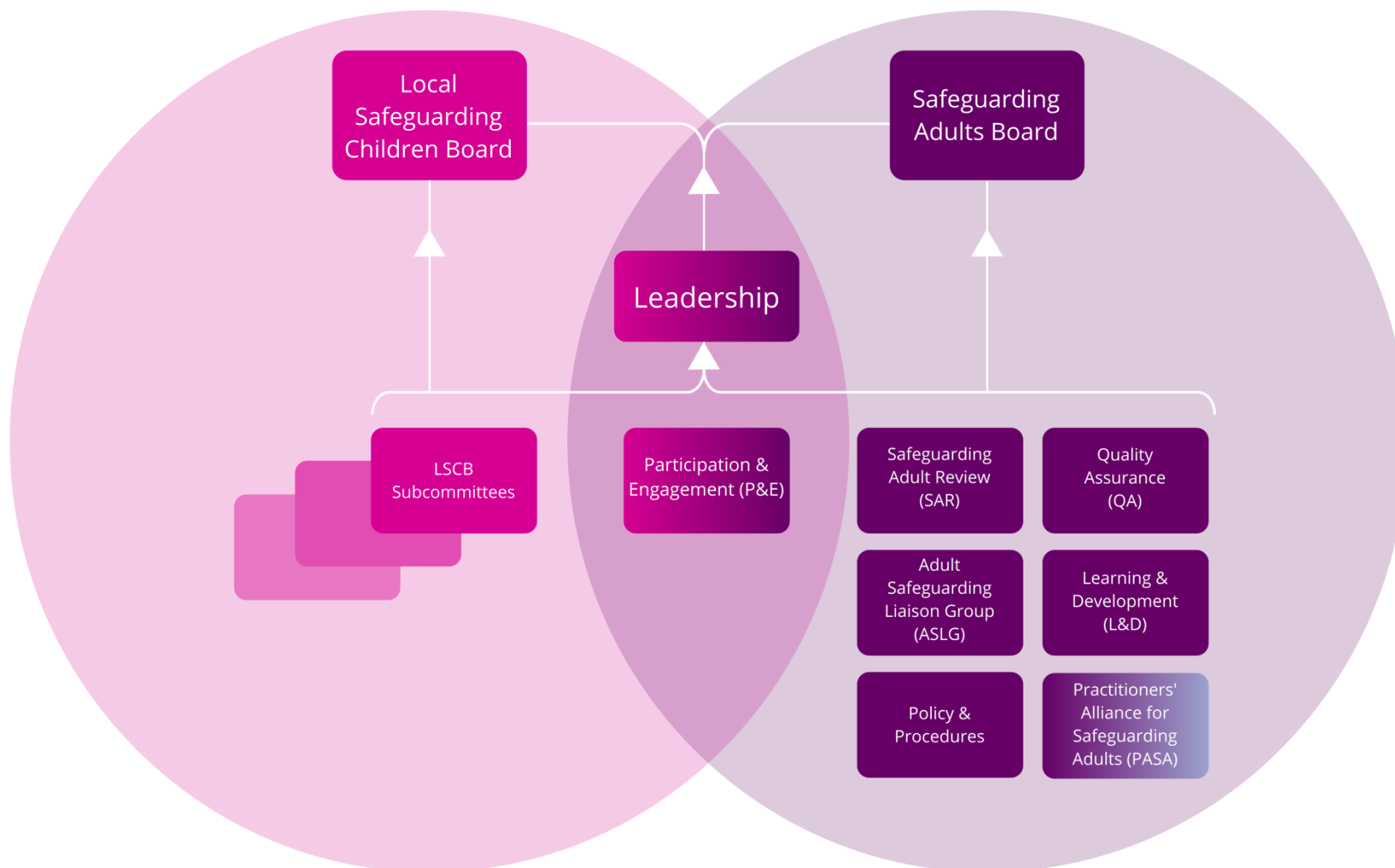


Appendix A: Governance and Accountability: Board Structure



Appendix B: Board Membership

Name	Title	Representing
Graham Bartlett	Independent Chair	B&H Safeguarding Adults Board
Mia Brown	Business Manager	B&H Safeguarding Adults Board
Michelle Jenkins	Head of Safeguarding & Professional Standards	Health & Adult Social Care, Brighton & Hove City Council
Rob Persey	Executive Director	Health & Adult Social Care, Brighton & Hove City Council
Brian Doughty	Head of Adult Assessment Services	Health & Adult Social Care, Brighton & Hove City Council
Candy Gallinagh	Designated Nurse Safeguarding Adults, MCA Lead	NHS Brighton and Hove CCG
Soline Jerram	Chief Nurse	NHS Brighton and Hove CCG
Allison Cannon	Chief Nurse for Sussex CCGs	NHS Hastings and Rother CCG
Fiona Macpherson	Detective Superintendent	Sussex Police
Jason Tingley	Detective Superintendent, Public Protection	Sussex Police
Richard Bates	Detective Chief Inspector, Head of Safeguarding	Sussex Police
Andrea Saunders	Head of Probation, Sussex	National Probation Service
Andy Porter	Deputy Director of Social Work & Principal Social Worker	Sussex Partnership NHS Foundation trust
Beatrice Gahagan	Senior Manager	Age UK Brighton & Hove
Caroline Davies	Safeguarding Lead	Brighton & Sussex University Hospital NHS Trust
Christina Chatfield	Lay Member	
Cllr Karen Barford	Councillor, Lead Member Adult Social Care	Brighton & Hove City Council
David Feakes	Head of Safeguarding and Looked After Children	Sussex Community NHS Foundation Trust
David Kemp	Head of Community Safety	East Sussex Fire & Rescue Service
Deb Austin	Head of Safeguarding (Children)	Brighton & Hove City Council
Debbie Piggott	Head of Policy Development and Safeguarding Strategic Lead	Kent, Surrey & Sussex CRC

Domenica Basini	Assistant Director Safeguarding Adults	NHS England
Eleanor Battie	Lay Member	
Jackie Grigg	Chief Executive	Money Advice Plus
James Rowlands	Violence Against Women & Girls Commissioner	Community Safety, Brighton & Hove City Council
Jane Jewell	Inspection Manager, South East-Hub 2	Care Quality Commission
Jane Mitchell	Safeguarding Lead	SECAMB NHS Foundation Trust
Jo Henderson	Lead Nurse, Safeguarding Adults	Brighton & Sussex University Hospital NHS Trust
Jo-Anne Welsh	Director	Brighton Oasis Project (VAWG Forum)
Katrina Lake	Assistant Director Patient Experience and Safeguarding	NHS England
Peter Castleton	Commissioner	Community Safety, Brighton & Hove City Council
Peter Wilkinson	Public Health Consultant	Brighton & Hove City Council
Regan Delf	Assistant Director	Health, SEN & Disabilities, Brighton & Hove City Council
Richard Cattell	Principal Social Worker (Adults)	Health & Adult Social Care, Brighton & Hove City Council
Robert Sobotka	Lead Inspector	Care Quality Commission
Roland Marden	Evidence & Insight Manager	Healthwatch Brighton & Hove
Simon Hughes	Senior Manager, Support Services	Brighton Housing Trust
Steve Lennox	Executive Director of Nursing and Quality	SECAMB NHS Foundation Trust
Tony Benton	Safeguarding Adviser	Healthwatch Brighton & Hove
Tracy John	Head of Housing	Brighton & Hove City Council
Wendy Taylor	Deputy Director of Operations	Cranstoun

Appendix C: Agency Attendance

Agency	Jun 2017	Sep 2017	Dec 2017	Mar 2018	Overall
Health & Adult Social Care (including Public Health)					100%
B&H CCG					100%
Sussex Police					100%
BHCC Housing					50%
Brighton and Sussex University Hospitals NHS Trust					50%
Community Safety					50%
East Sussex Fire and Rescue Service					75%
Healthwatch B&H					100%
KSS Community Rehabilitation Company					75%
Lay Member Representation					75%
National Probation Service					50%
SECAMB					25%
Sussex Community NHS Foundation Trust					100%
Sussex Partnership NHS Foundation Trust					100%
Third Sector & Community & Voluntary Organisations					50%